

ePowerSwitch-1 Guard

Power Management & Supervision of IP Devices

ePowerSwitch-1 Guard is a Power Control Unit that enables remote power control of one device over Intranet, Internet or locally through a serial RS232 connection. It also enables to supervise 1 IP device (server, router, camera...) and automatically reboot it in case of lock-up.



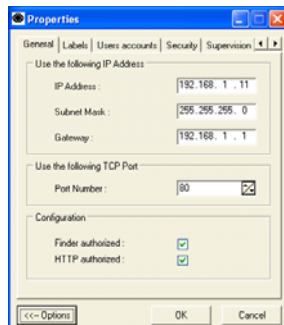
Front side

A series of front-panel LEDs provide quick status checks



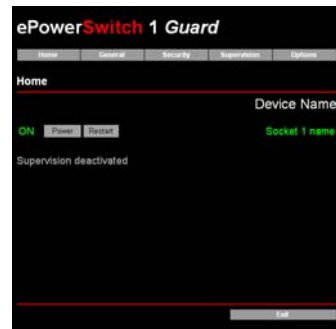
Back side

1 IEC AC input with fuse
1 IEC AC Power outlet
Load: 10 A / 230 V



ePS-Finder Configuration Tool

This convenient program is used for discovering, configuring, and setting the IP address of the ePowerSwitch devices on your network. It enables a quick initial configuration without using IP addresses, Subnet Masks and Port numbers.



Outlet Power Control

The administrator name/password pair allows configuration and access to the power outlet. The user name/password pair allows access only to the power outlet.

Features

- **On, Off and Restart functions.**

The power outlet can be turned On/Off or restarted over a TCP/IP Ethernet connection (Intranet / Internet) or through an RS-232 Terminal connection.

- **IP Security**

- Two levels of Password Security. The administrator name/password pair allows configuration and access to the power outlet and the user name/password pair only allows access to the power outlet.
- 4 security masks allow to grant or deny access to only a specific IP address or a group of IP addresses.

- **IP Device Supervision**

Supervision of an IP device with automatic reboot function. The supervision can be performed using a Ping command and/or using a Scan command of a specific Port Number.

- **Restart Delay**

The Restart Delay can be chosen between 5 and 60 seconds between off/on.

- **ePowerSwitch Device Name and Outlet Device Name**

The administrator can define a name for the ePowerSwitch and a name for its power outlet. These names can be up to 32 characters in length.

- **Configuration**

Configuration functions can be performed using PS-Finder, a convenient tool for discovering, configuring, and setting the IP address of ePowerSwitch devices on your network. It enables a quick initial configuration without using IP addresses, Subnet Masks and Port numbers and runs under Windows 95/98/Me, NT/2000/2003 and XP.

Configuration can also be performed by the administrator over HTTP through the Network. This feature can be disabled by the administrator.

And for non Windows operating systems or systems without network connectivity, the configuration can also be done using the built-in serial interface.