

# ePowerSwitch D4

## Power Management & Supervision of IP Devices

**ePowerSwitch-D4** is a Power Distribution and Control Unit that enables remote power control of 4 devices over Intranet, Internet or locally through a serial RS232 connection. It also enables to supervise 4 IP devices (servers, routers, cameras...) and automatically reboot them in case of lock-up.

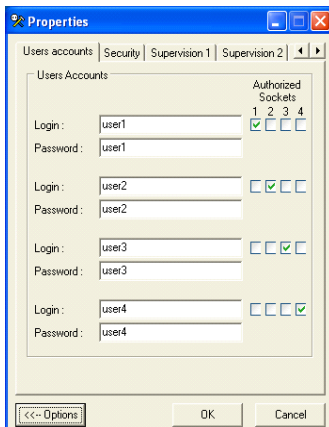


### Front side

A series of front-panel LEDs provide quick status checks

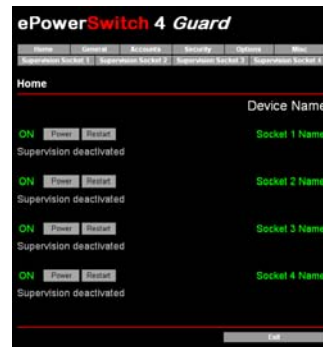
### Back side

1 IEC AC inputs with fuse  
4 IEC AC Power outlets 10 A  
Total load: 10 A / 230 V



### ePS-Finder Configuration Tool

This convenient program is used for discovering, configuring, and setting the IP address of ePowerSwitch devices on your network. It enables a quick initial configuration without using IP addresses, Subnet Masks and Port numbers.



### Outlet Power Control

The administrator name/password pair allows configuration and access to all power outlets. The user name/password pairs allow access only to the power outlets for which one the user has the rights.

## Features

- **On, Off and Restart functions.**  
Each power outlet can be turned On/Off or restarted over a TCP/IP Ethernet connection (Intranet / Internet) or through an RS-232 Terminal connection.
- **IP Security**
  - Two levels of Password Security. The administrator name/password pair allows access to all power outlets and the user name/password pairs allow access only to the power outlets for which one the user has the rights.
  - 4 security masks allow to grant or deny access to only a specific IP address or a group of IP addresses.
- **IP Device Supervision**  
Supervision of up to 4 IP devices with automatic reboot function. The supervision can be performed using a Ping command and/or using a Scan command of a specific Port Number.
- **Restart Delay**  
This delay, which applies to the restart activity at all power outlets, can be chosen between 5 and 60 seconds between off/on.
- **Sequence power startups and shutdowns outlet by outlet**  
This feature enables to reduce inrush currents.
- **ePowerSwitch Device Name and Outlet Device Name**  
The administrator can define a name for the ePowerSwitch-D4 and names for each of its four power outlets. These names can each be up to 32 characters in length.
- **Configuration**  
Configuration functions can be performed using ePS-Finder, a convenient tool for discovering, configuring, and setting the IP address of ePowerSwitch devices on your network. It enables a quick initial configuration without using IP addresses, Subnet Masks and Port numbers and runs under Windows 95/98/Me, NT/2000/2003 and XP.  
Configuration can also be performed by the administrator over HTTP through the Network. This feature can be disabled by the administrator.  
And for non Windows operating systems or systems without network connectivity, the configuration can also be done using the built-in serial interface.