

ePowerSwitch-M8 Master

Power Management over IP

ePowerSwitch-M8 Master is a Power Distribution and Control Unit that enables remote power management of 8 devices over Intranet, Internet or locally through a RS232 Terminal connection. The controlled power outlets can be extended up to 40 by cascading up to 4 Slave models.



Front side

A series of front-panel LEDs provide quick status checks



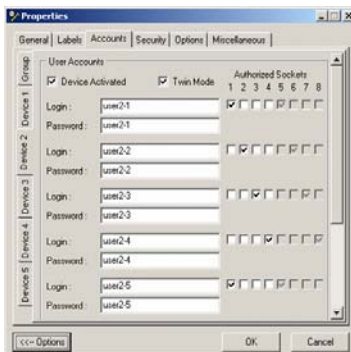
Cascading of up to 5 devices

1 Master and 4 Slaves control up to 40 power outlets using 1 IP address.
Total current load: 100 A / 230 V

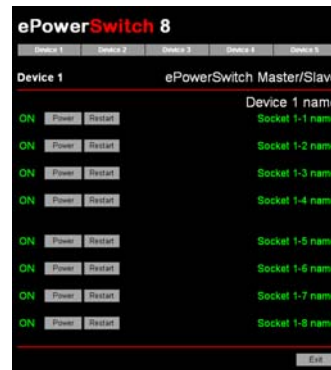


Back side

2 separate AC inputs allow
- a total load of 20 A (230 V)
- power managing of devices with redundant power supply



ePS-Finder Configuration Tool
This convenient program is used for discovering, configuring, and setting the IP address of the EPowerSwitch Master on your network. It enables a quick initial configuration without using IP addresses, Subnet Masks and Port numbers.



Outlet Power Control
The administrator name/password pair allows access to all power outlets and the user name/password pairs allow access only to the power outlets for which one the user has the rights.

Features

- **On, Off and Restart functions.**

Each power outlet can be turned On/Off or restarted over a TCP/IP Ethernet connection (Intranet / Internet) or through an RS-232 Terminal connection. The number of controlled outlets can be extended up to 40 by cascading 4 Slave models.

- **Two AC inputs and two external fuses**

To improve the security and increase the total current load the ePowerSwitch-M8 has two separate power inputs. The first power input provides power for plugs 1 through 4 and the second power input provides power for plugs 5 through 8. Together with the Twin Mode, this feature is ideal for power management of servers with redundant power supplies.

- **Twin Mode**

The Twin Mode allows to control in one shot a pair of power outlets (intended for servers with redundant power supplies).

- **IP Security**

- Two levels of Password Security. The administrator name/password pair allows access to all power outlets and the user name/password pairs allow access only to the power outlets for which one the user has the rights.
- 8 security masks allow to grant or deny access to only a specific IP address or a group of IP addresses.

- **Restart Delay**

This delay, which applies to the restart activity at all power outlets, can be chosen between 5 and 60 seconds between off/on.

- **Sequence power startups and shutdowns outlet by outlet**

This feature enables to reduce inrush currents.

- **ePowerSwitch Device Name and Outlet Device Name**

The administrator can define a name for the ePowerSwitch-M8 and names for each of its eight power outlets. These name can each be up to 32 characters in length.

- **Configuration**

Configuration functions can be performed using ePS-Finder, a convenient tool for discovering, configuring, and setting the IP address of ePowerSwitch devices on your network. It enables a quick initial configuration without using IP addresses, Subnet Masks and Port numbers and runs under Windows 95/98, NT/2000 and XP.

For non Windows operating systems or systems without network connectivity, the configuration can also be done using the built-in serial interface.