

ePowerSwitch 4XM



**High Security
ePowerSwitch with IP device
and environmental monitoring**

ePowerSwitch-4XM Master is an enhanced power distribution and control unit that enables remote power management of 4 devices over Ethernet. This high security device supports the HTTPS protocol and also includes IP device and environmental monitoring functionalities. It supports the HTTP, HTTPS, DHCP, Syslog, SNMP, SMTP and SNTp protocols. An internal clock allows to timestamp Syslog messages, e-mails and internal logs.

Features

> Remote Power Management

Each power outlet can be turned On/Off or restarted over IP.

> Redundant power supply for the web server

To improve the security the ePowerSwitch 4XM supports dual power inputs. The web server can be supplied either through the main power input or through an auxiliary power adapter.

> Power Outlet Grouping

Enables to group individual outlets. Ideal to control several devices with a single command.

> Sequential power up/down

Avoids the risk for a power inrush to blow a fuse or circuit breaker in the data centre.

> Restart Delay

The restart delay of the power outlets can be set individually between 0 and 65535 seconds.

> Access and accounts

The administrator password allows configuration and control of all power outlets. The administrator can also create up to 16 user accounts with access rights only to designated outlets.

> Multiple concurrent users

16 users can have a concurrent access to the ePowerSwitch and control their designated power outlets.

> Advanced Security

For your security, account access and data transfer can be encrypted with SSL Technology.

> DHCP client

The DHCP option enables to reduce the configuration management.

> Scheduler for Time-Controlled Applications

This time-controlled function is used to schedule actions according to a defined time table. It lets you control power outlets and dry contacts and allows to send Emails.

> IP Device Monitoring

This function lets you monitor IP devices using PING and/or Scan functions with automatic reboot in case of lock-up of the monitored device.

> Temperature and Humidity monitoring

This function lets you monitor temperature and humidity in racks or server rooms. If thresholds are exceeded, power outlets can be automatically controlled and Email / Syslog messages / SNMP traps sent.

> Improved log file reporting

Event logs are written to the internal log file and can be sent to a primary and a secondary Syslog Server and to an Email address.

> Programmable Labels

A 32-character label can be attributed to the ePowerSwitch and to each power outlet to avoid confusion during operation.

> Easy Configuration

Full configuration can be performed through the Web using http or https. The network settings can also be done via a convenient tool or a Terminal connection.

ePowerSwitch

ePowerSwitch 4XM

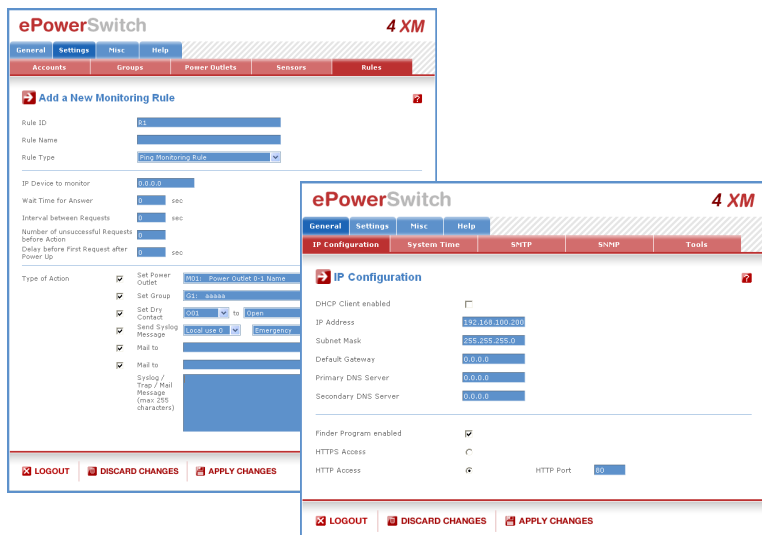


Benefits

- > Remote power control of 4 power outlets over IP.
- > SSL 128-bit technology.
- > Auxiliary power supply (12 VDC) for the Web server.
- > Access protected by names and passwords (1 administrator and up to 16 user accounts).
- > Outlet grouping.
- > Power-up sequencing avoids in-rushes currents at start-up.
- > Free definable labels for the device, each power outlet, groups, rules...
- > Programmable restart delays.
- > Up to 16 rules: IP device, dry contact and power supply monitoring, environmental monitoring (Temperature, humidity...) and schedule rule.
- > Easy and fast configuration.
- > Occupies only 1U of rack space.
- > 4 inputs for dry contacts.
- > Firmware updateable over the LAN.

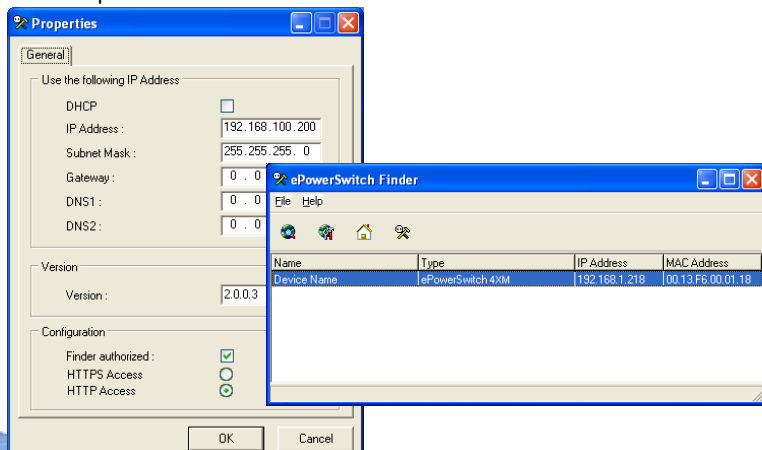
Web Pages

The settings for the Web Server and the control of the power outlets are organized by an easy to use set of tabs.



Windows configuration tool

This convenient Windows program provides an easy and quick way to configure your ePowerSwitch especially by the first settings of the Network parameters.



Front side / Back side

A series of front-panel LEDs provide quick status views. The input connector on the back allows an easy connection of 4 dry contacts.

What's included

- > 1 EPS-4 XM XX (XX specifies the delivered power cable)
 - > 1 power cable, 1.80 meter IEC-320-C13 to EU, CH or UK standard
- EU = Schuko/Europe, CH = Swiss, UK = United Kingdom
- > 1 power adapter for web server auxiliary power supply
- > 1 serial cable (SUB-D9 male/female) 1.80 meter
- > 1 CD-ROM with user guide in English and IP configuration tool

Technical Features

- > Network standards: IEEE 802.3, 10/100BASE-T
- > Network protocols: TCP/IP, HTTP, HTTPS
- > Network connection: RJ-45 for UTP CAT5
- > Max. network cable length: 100 m (not included)
- > Serial connection: RS-232, SUB-D 9 female
 - > SSL Technology: Version 2 and 3
 - > Nominal input voltage: 230 V/50Hz
- > Input/Output power socket: IEC-320
 - > Maximum total current: 10A
 - > Maximum current/outlet: 10A
- > LEDs: 1 for Power Supply/Status
 - 4 for the Power Outlets status
 - 1 for Network traffic
 - 1 for Network Speed 10/100 Mbits/s
- > Operating temperature: 0°C to +40°C
- > Operating humidity: 10% to 80%
- > Dimensions: 437 x 107 x 42 mm
- > Weight: 1.8 kg
- > Approvals: CE, EN55022 & EN55024, RoHS
- > Guarantee: 2 years repair or replace

Distributor :

AXU

Via Postumia 12 - 20153 Milano - Italy
Tel (+39) 02 48 20 24 37 - (+39) 02 48 20 37 74
GSM (+39) 33 88 68 95 50
Fax (+39) 02 70 05 21 868
e-mail: info@axu.it