

# ePowerSwitch 8G Guard



**ePowerSwitch-8G Guard** is a power control unit that enables remote power control of 8 devices over Intranet, Internet or locally through an RS-232 serial connection. It also allows you to monitor 8 IP devices (server, router, camera...) and automatically reboot them in case of lock-up.

## Features

### > On, Off and Restart functions

Each power outlet can be turned On/Off or restarted over IP or through an RS-232 serial connection.

### > Two separate AC Power Inputs

To improve the security and increase the local current load, the ePowerSwitch-8G has two separate power inputs. The first one provides power for plugs 1 to 4 and the second one for plugs 5 to 8. This feature is ideal for power management of servers with redundant power supplies.

### > IP Device Monitoring

Monitoring of up to 8 IP devices with automatic reboot function. The monitoring can be performed using a Ping and/or a Scan command of 8 specific IP addresses and Port Numbers.

### > IP Security

Two Password levels : the administrator password allows configuration and access to all power outlets and 8 users passwords allow access only to the power outlets for which the user has the rights.

8 security masks allow you to grant or deny access to only a specific IP address or a group of IP addresses.

### > Restart Delay

The restart delay of the power outlets can be set individually between 5 and 60 seconds.

### > Sequential power up/down

Avoids the risk for a power inrush to blow a fuse or circuit breaker in the data centre.

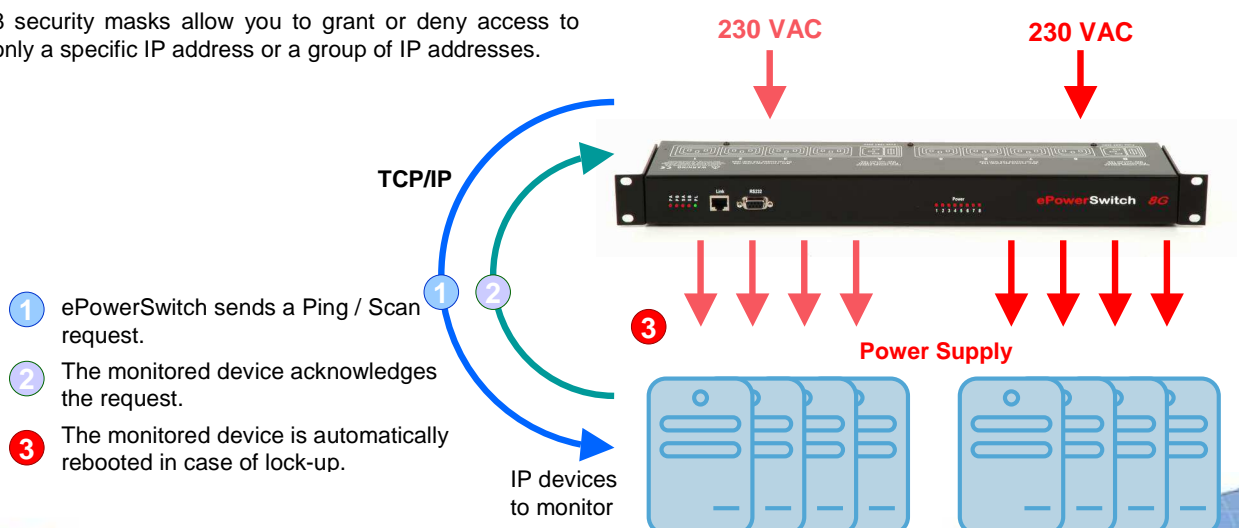
### > Labels

To avoid confusions, the administrator can define a label to the device and its eight power outlets.

### > Easy configuration

The configuration can be done through a standard web browser, a serial console interface or a convenient Windows tool which provides an easy and quick way to configure your ePowerSwitch especially by the first settings of the Network parameters.

ePowerSwitch



# ePowerSwitch 8G Guard



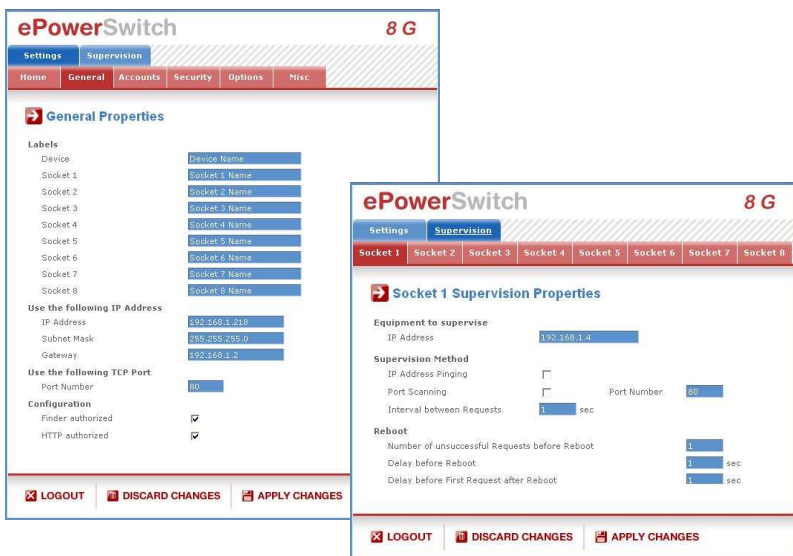
## Benefits

- > Remote power control of 8 outlets
- > Remote control and administration over IP and RS-232.
- > Dual power input allows increasing total load and security.
- > Monitoring of 8 IP devices with automatic reboot function in case of lock-up.
- > Power-up sequencing avoids in-rushes currents at start-up.
- > Access protected by names and passwords (1 administrator and 8 user accounts).
- > Free definable labels for the device and each power outlet.
- > Easy and fast configuration.
- > Occupies only 1U of rack space.
- > Status LEDs for power input, network and power outlets.
- > Firmware updateable over the LAN.

A series of front-panel LEDs provide quick status view.  
2 separate AC inputs allow power managing of devices with redundant power supply and a total load of 20 A.

## Web Pages

The settings for the Web Server and the control of the power outlets are organized by an easy to use set of tabs.



## What's included

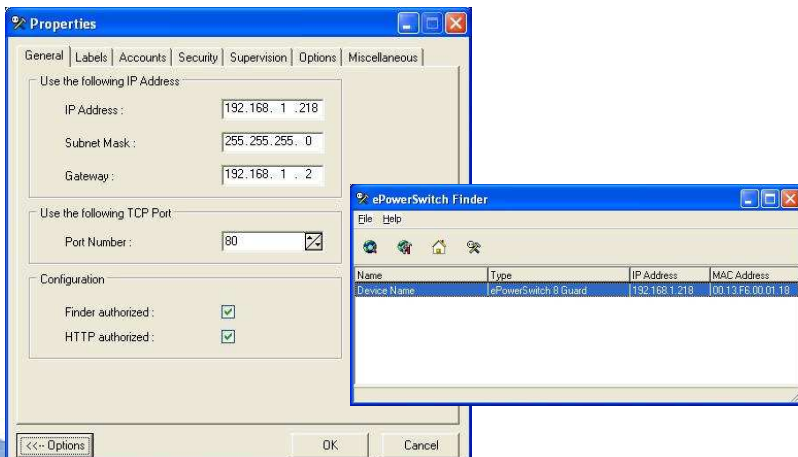
- > 1 EPS 8G-XX (XX specifies the delivered power cable)
- > 2 power cables, 1,8 meter IEC-320-C13 / EU, CH or UK standard
- EU = Schuko/Europe, CH = Swiss, UK = United Kingdom
- > 1 serial cable (SUB-D9 male/female) 1,80 meter
- > 1 CD-ROM with user guide in English and IP configuration tool

## Technical features

- > Network standards: IEEE 802.3, 10BASE-T
- > Network protocols: TCP/IP, HTTP
- > Network connection: RJ-45 for UTP CAT5
- > Max. network cable length : 100 m (not included)
- > Serial connection: RS-232, SUB-D 9 female
- > Nominal input voltage: 230 V/50Hz
- > Input power socket: IEC-320
- > Output voltage: 230 V/50Hz
- > Output power socket: IEC-320
- > Maximum total current: 2 X 10A
- > Maximum current / outlet: 10A
- > LED's: 1 for Power and network Traffic
- 1 for each power supply group
- 1 for supervision activity (group A)
- 1 for supervision activity (group B)
- 8 for the power outlet status
- 1 for the socket status
- > Operating temperature: 0°C to + 40°C
- > Operating humidity: 10% to 80%
- > Dimensions: 437 x 107 x 42 mm
- > Weight: 2 kg
- > Approvals: CE, EN55022 & EN55024, RoHS
- > Guarantee: 2 years repair or replace

## Windows configuration tool

This convenient Windows program provides an easy and quick way to configure your ePowerSwitch especially by the first settings of the Network parameters.



Distributor :

# AXU

Via Postumia 12 - 20153 Milano - Italy  
Tel (+39) 02 48 20 24 37 - (+39) 02 48 20 37 74  
GSM (+39) 33 88 68 95 50  
Fax (+39) 02 70 05 21 868  
e-mail: info@axu.it